

## Declaration of Performance



ACP(Concrete) Ltd,  
Lakes Road, Workington Cumbria, CA15 3YP

13

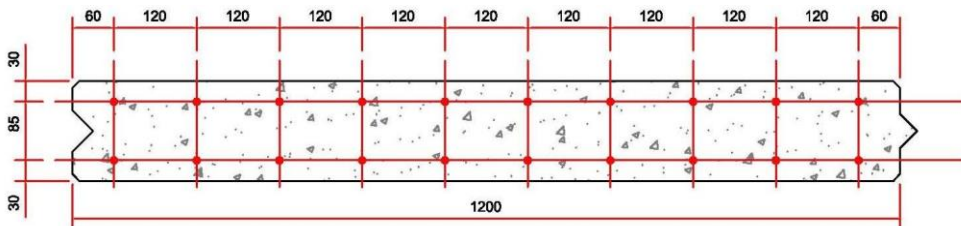
Factory production control  
0086-CPD-600822

EN 14492

Retaining wall element

Prestressed Wall panels as retaining walls

Concrete Compressive strength $f_{ck}$	50 N/mm <sup>2</sup>
Prestressing Steel	
Ultimate tensile strength $f_{pk}$	1770N/mm <sup>2</sup>
Tensile 0.1% proof stress $f_{p0,1k}$	1500N/mm <sup>2</sup>
Dimensions in mm	



For detailing and durability see technical information	See drawings as listed on the delivery ticket
Strands Y1770-9.3	20no
Initial stress	1239N/mm <sup>2</sup>
End protrusion of strands l	0mm
Order Code	See delivery ticket
Product Catalogue	See web site
Technical information	See web site

**ACP reference HD145 x 1200**

The performance of this Product complies with the Design and Harmonised Codes applicable to that product. The relevant code, performance criteria and factory identifier are shown. The design drawings and calculation detail the design codes and physical dimensions of the product.

The initial factory inspection has been completed by BSI (Notifying Body 0086) and the continuous surveillance, assessment and evaluation of the Factory Production control is declared as compliant for all products of this type.

W Mercer Managing  
Director 11/03/16